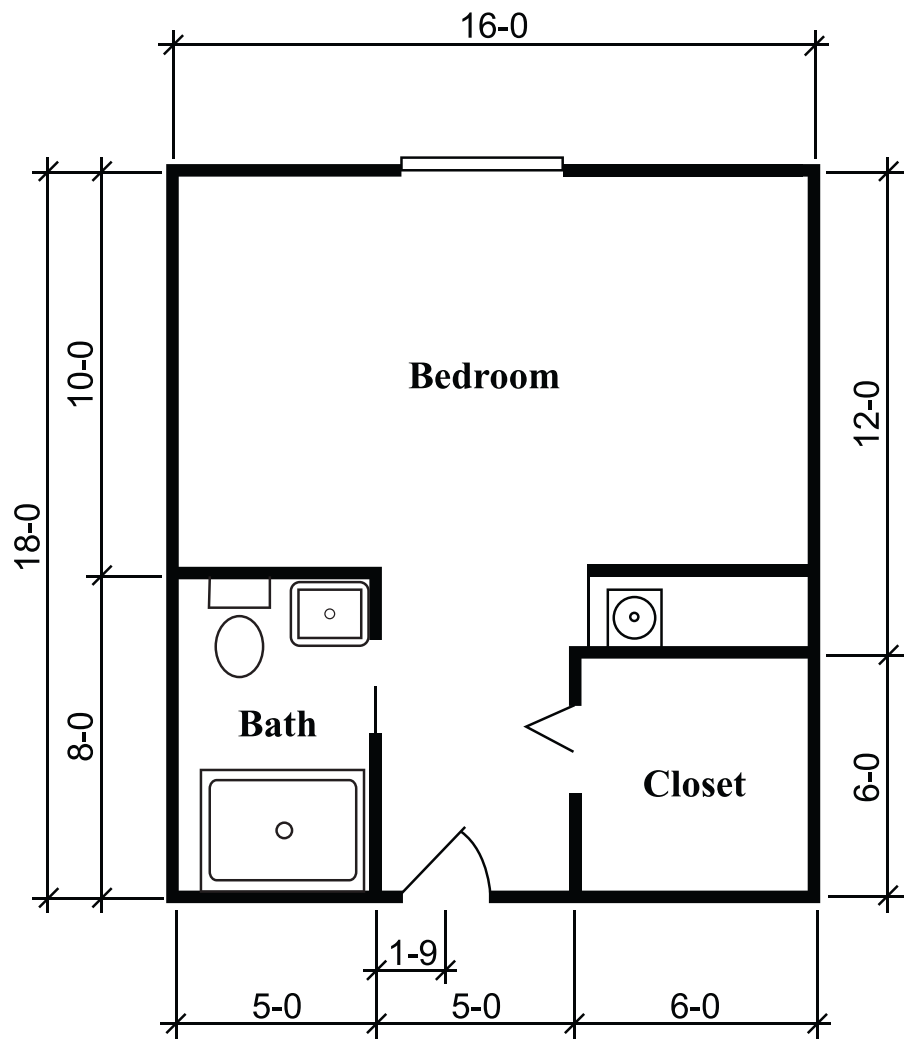


Floor Plans Assisted Living

Silverdale Suite
288 sq. ft.



Brookdale Lewisville

965 N. Garden Ridge Boulevard
Lewisville, Texas 75077

(972) 420-9600

Facility No. 000315

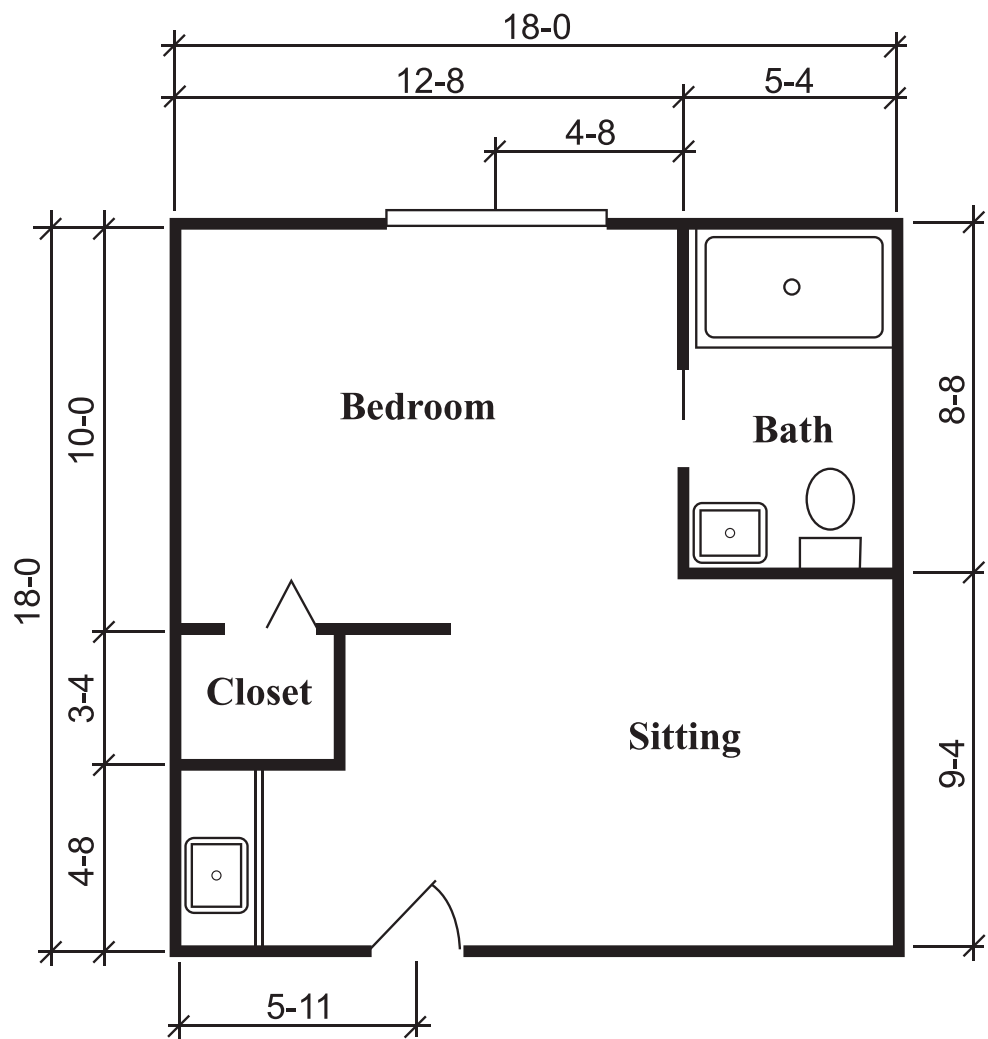
Dimensions are approximate. Floor plans may vary.



© 2022 Brookdale Senior Living Inc. All rights reserved.
BROOKDALE SENIOR LIVING is a registered trademark of Brookdale Senior Living Inc.

Floor Plans Assisted Living

Townsend Suite
324 sq. ft.

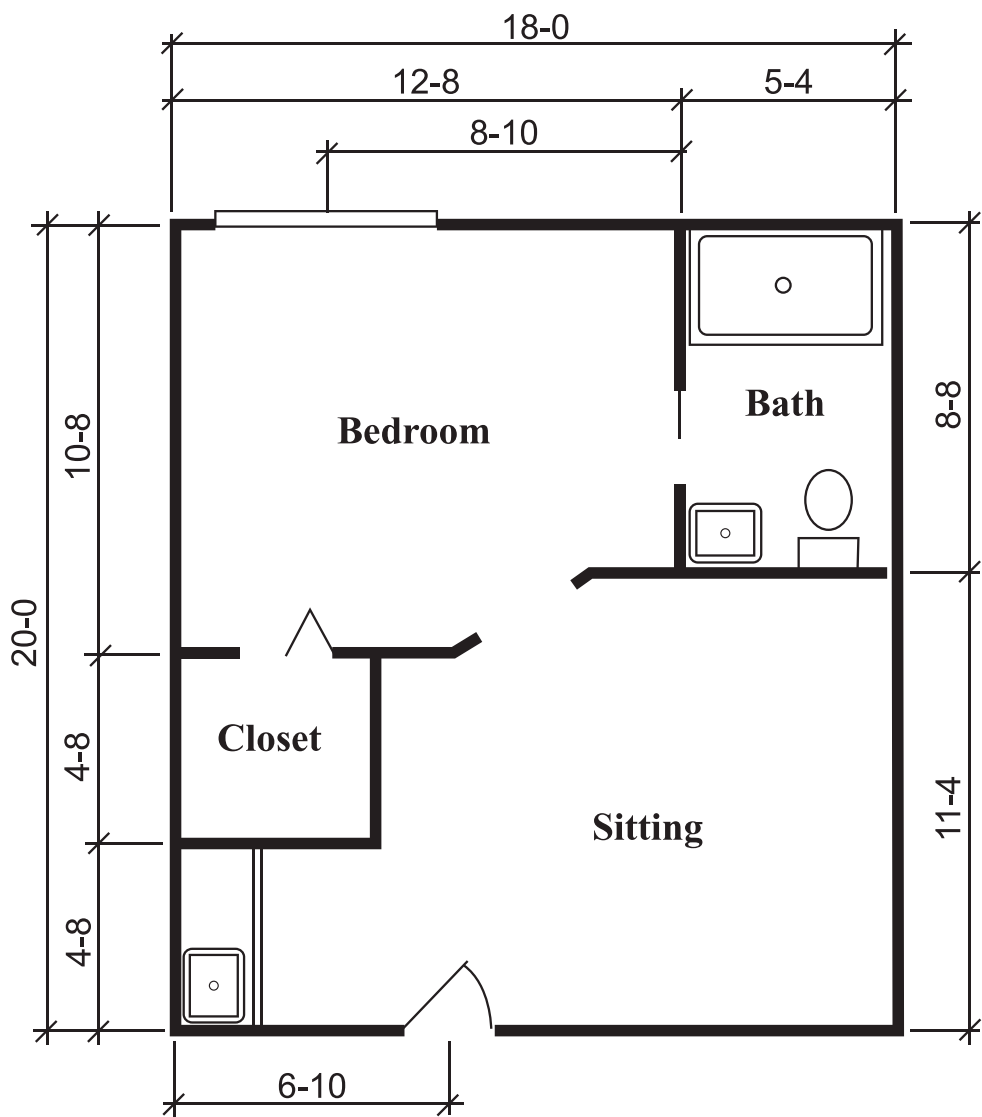


Brookdale Lewisville
965 N. Garden Ridge Boulevard
Lewisville, Texas 75077
(972) 420-9600
Facility No. 000315

Dimensions are approximate. Floor plans may vary.

Floor Plans Assisted Living

Richmond Suite
360 sq. ft.



Brookdale Lewisville

965 N. Garden Ridge Boulevard
Lewisville, Texas 75077

(972) 420-9600

Facility No. 000315

Dimensions are approximate. Floor plans may vary.



© 2022 Brookdale Senior Living Inc. All rights reserved.
BROOKDALE SENIOR LIVING is a registered trademark of Brookdale Senior Living Inc.