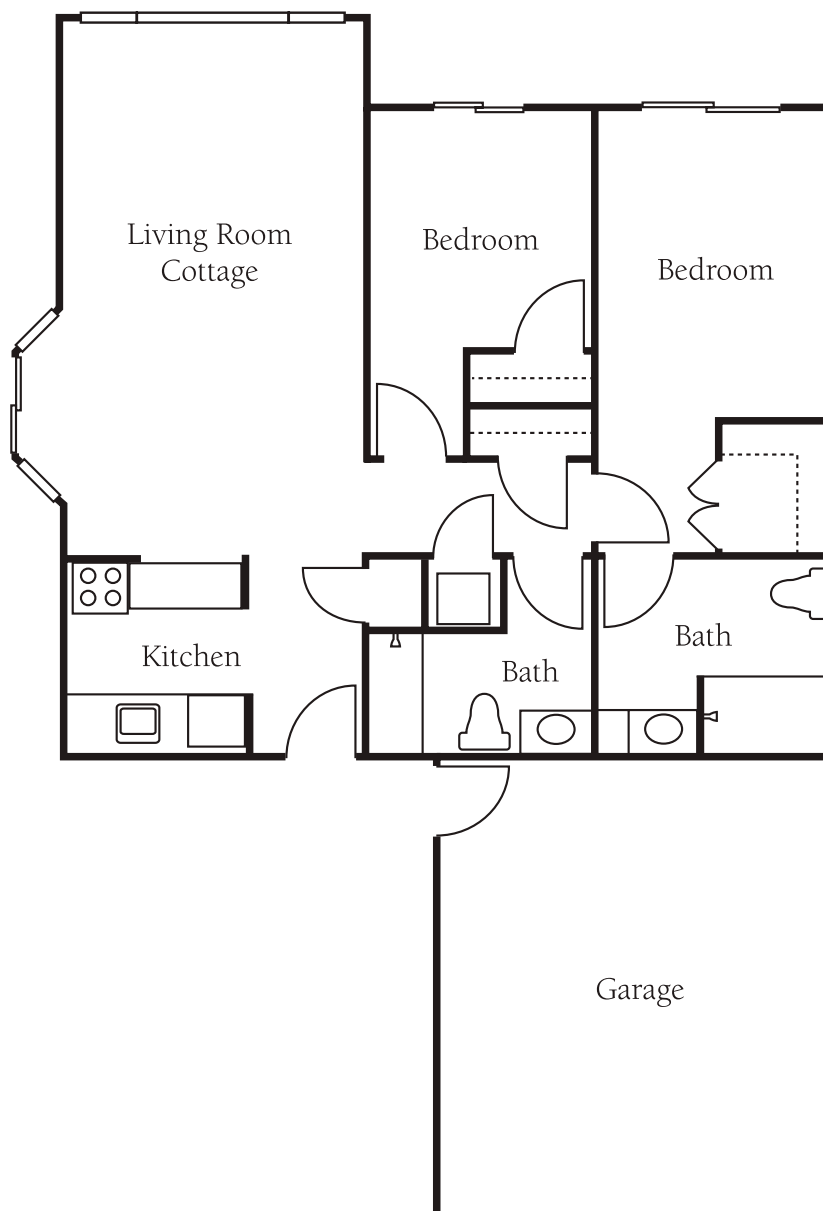


# Floor Plans Independent Living

Cottage



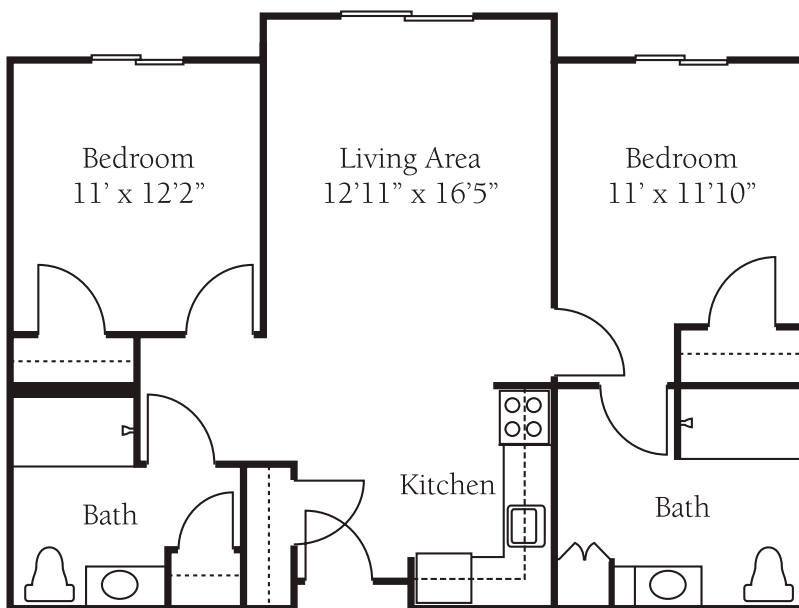
## Brookdale Foundation House

32290 1st Avenue South  
Federal Way, Washington 98003  
(253) 838-8823

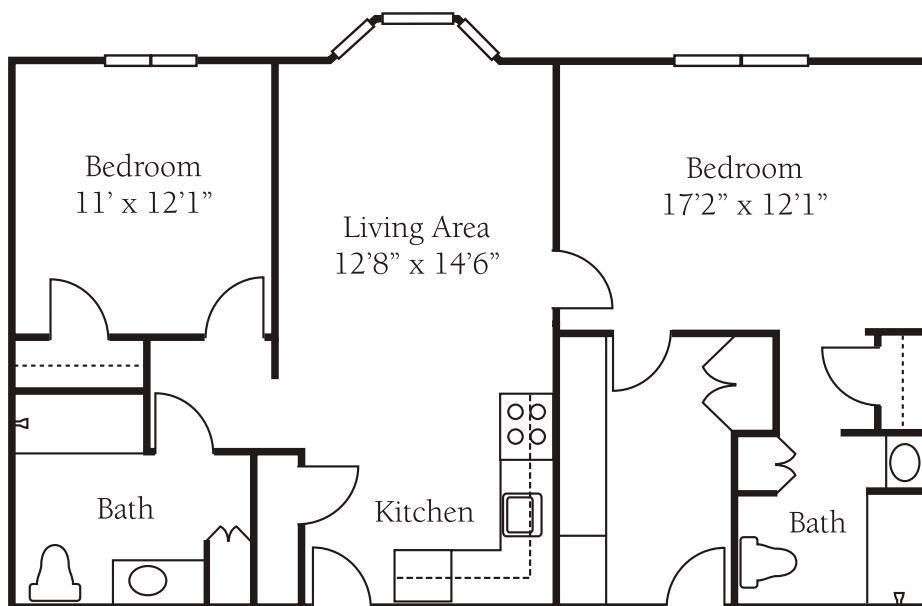
*Dimensions are approximate. Floor plans may vary.*

# Floor Plans Independent Living or Assisted Living

Two Bedroom - A



Two Bedroom - 6



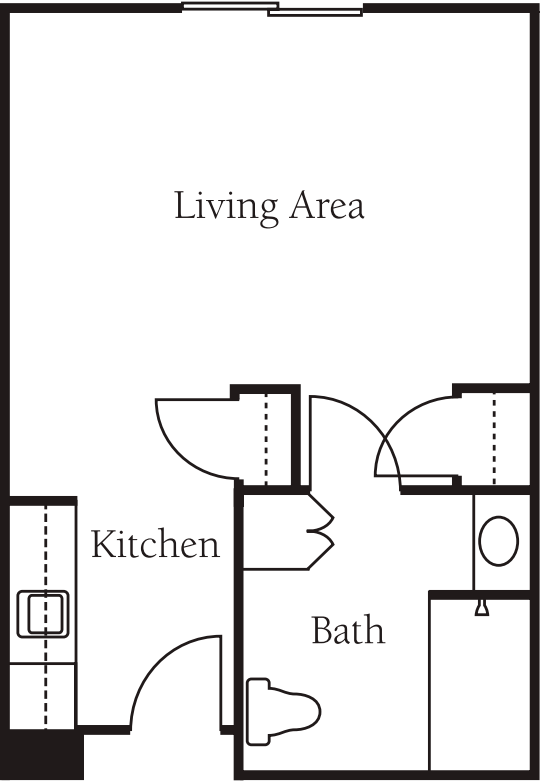
## Brookdale Foundation House

32290 1st Avenue South  
Federal Way, Washington 98003  
(253) 838-8823

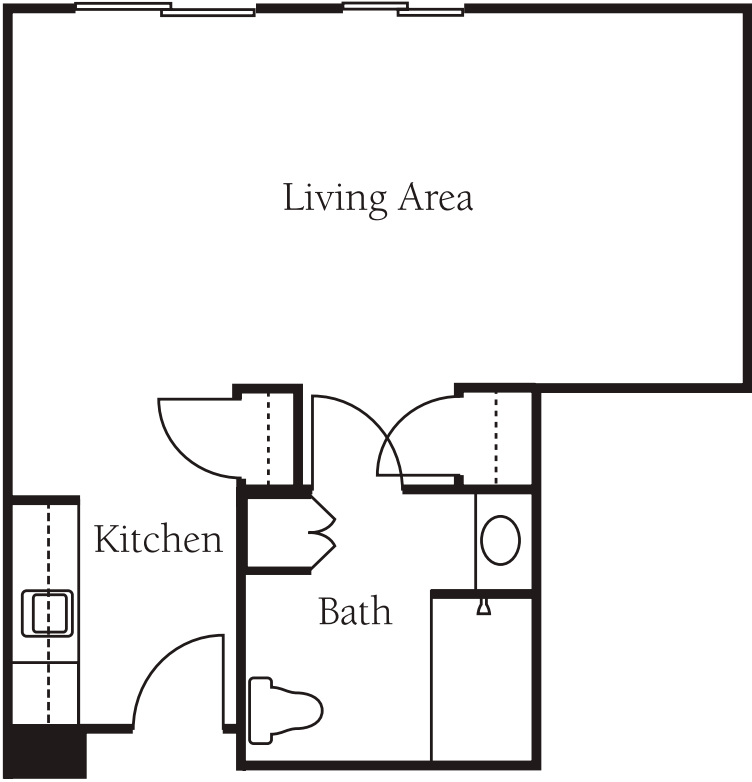
*Dimensions are approximate. Floor plans may vary.*

# Floor Plans Independent Living or Assisted Living

Studio A2



Studio Alcove A2

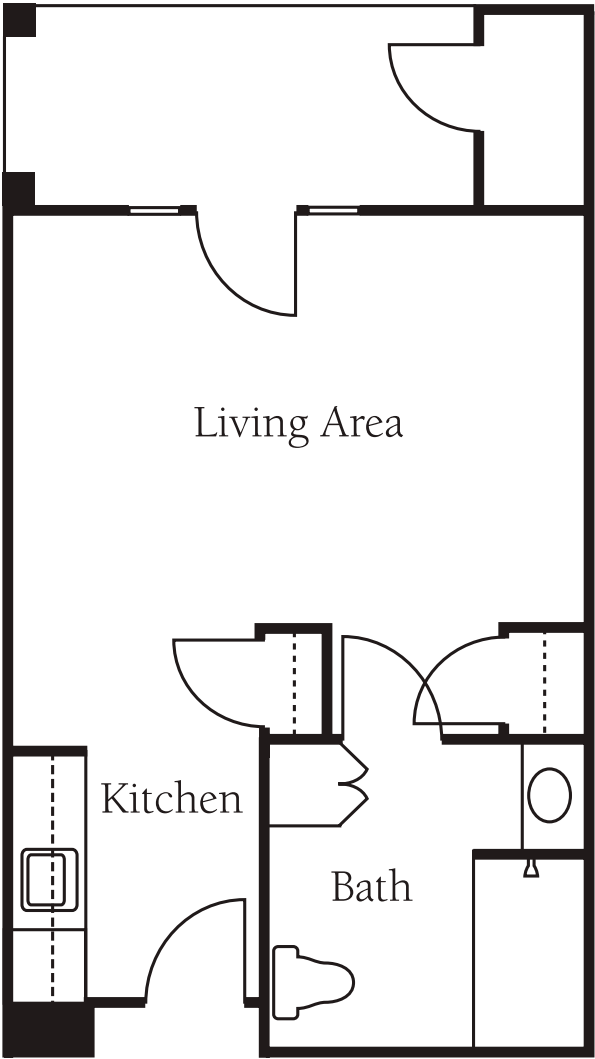


**Brookdale Foundation House**  
32290 1st Avenue South  
Federal Way, Washington 98003  
**(253) 838-8823**

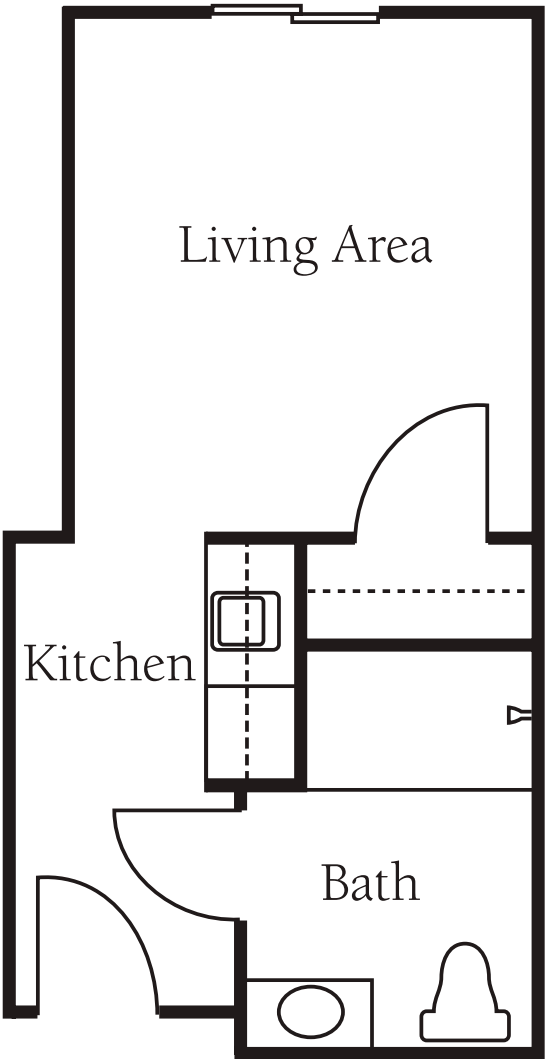
*Dimensions are approximate. Floor plans may vary.*

# Floor Plans Independent Living or Assisted Living

Studio B2



Studio C2

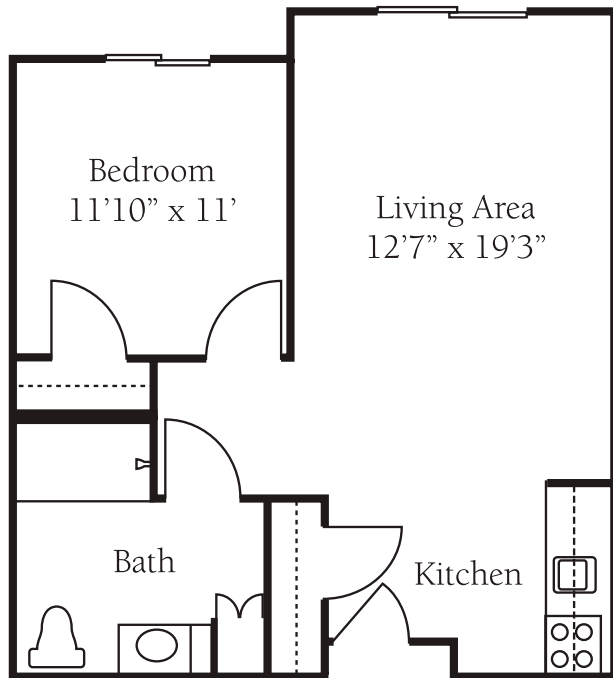


**Brookdale Foundation House**  
32290 1st Avenue South  
Federal Way, Washington 98003  
**(253) 838-8823**

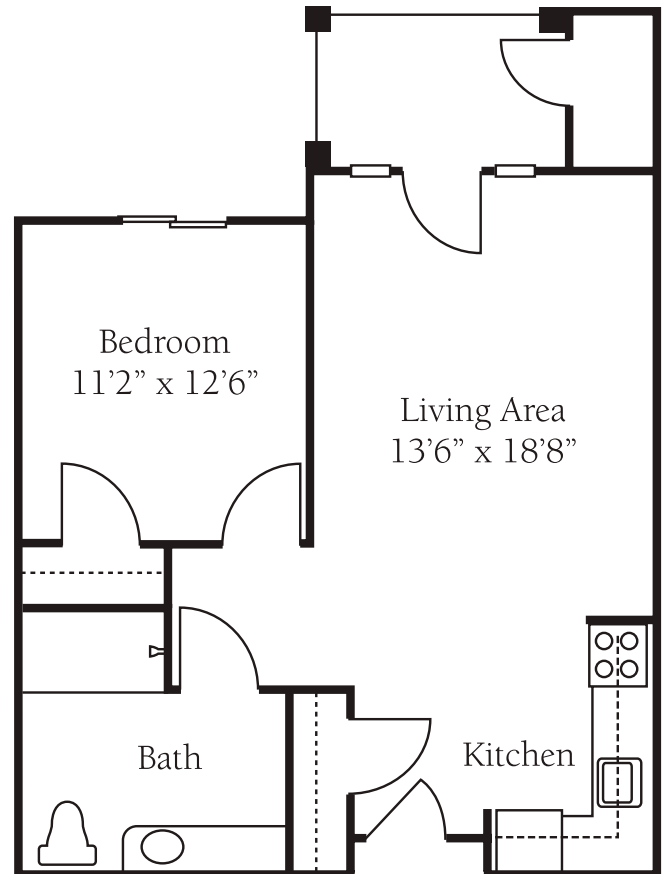
*Dimensions are approximate. Floor plans may vary.*

# Floor Plans Independent Living or Assisted Living

One Bedroom - A2



One Bedroom - B2



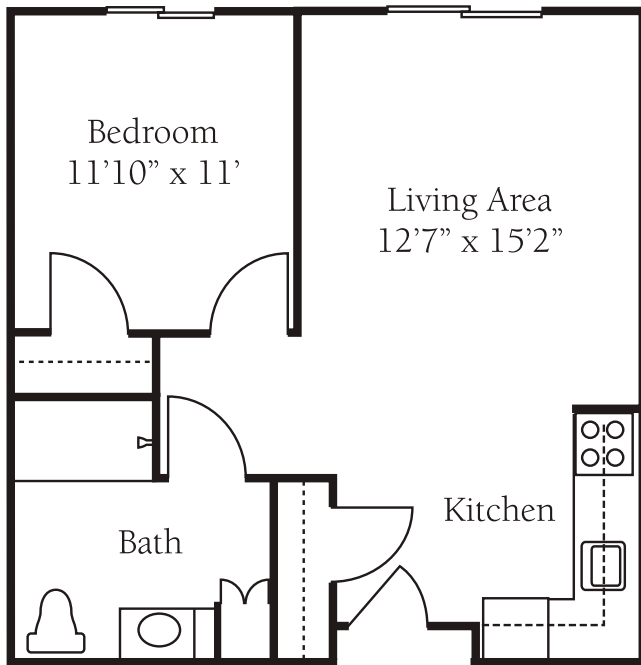
## Brookdale Foundation House

32290 1st Avenue South  
Federal Way, Washington 98003  
(253) 838-8823

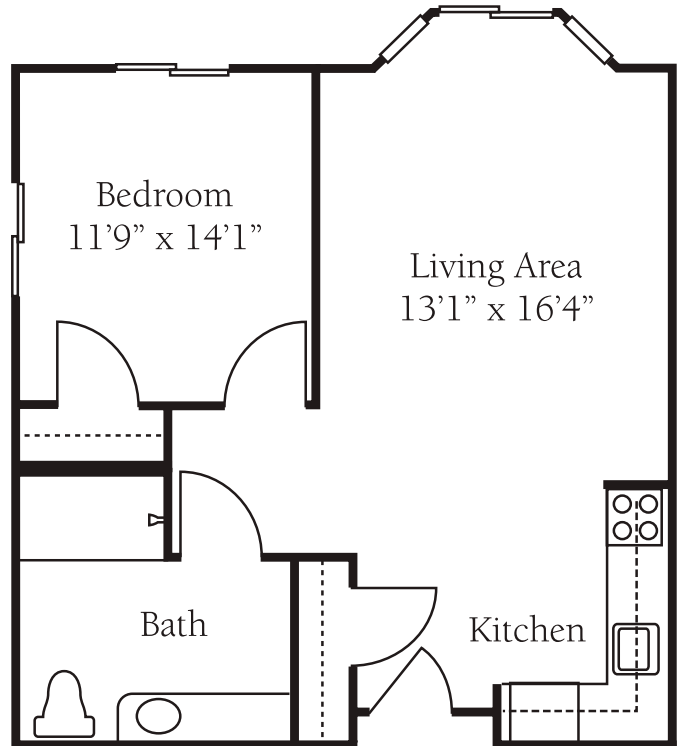
*Dimensions are approximate. Floor plans may vary.*

# Floor Plans Independent Living or Assisted Living

One Bedroom - C



One Bedroom - D2



## Brookdale Foundation House

32290 1st Avenue South  
Federal Way, Washington 98003  
(253) 838-8823

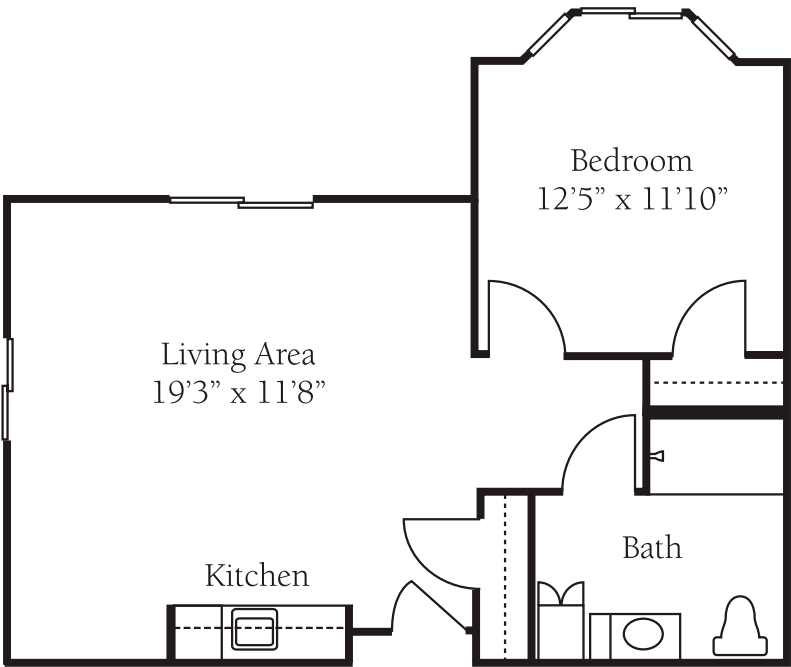
*Dimensions are approximate. Floor plans may vary.*



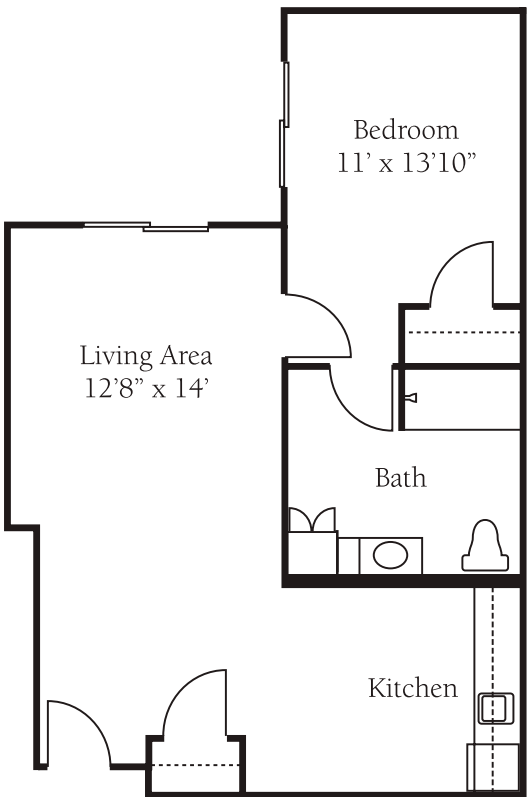
© 2021 Brookdale Senior Living Inc. All rights reserved.  
BROOKDALE SENIOR LIVING is a registered trademark of Brookdale Senior Living Inc.

# Floor Plans Independent Living or Assisted Living

One Bedroom – F2



One Bedroom – L2



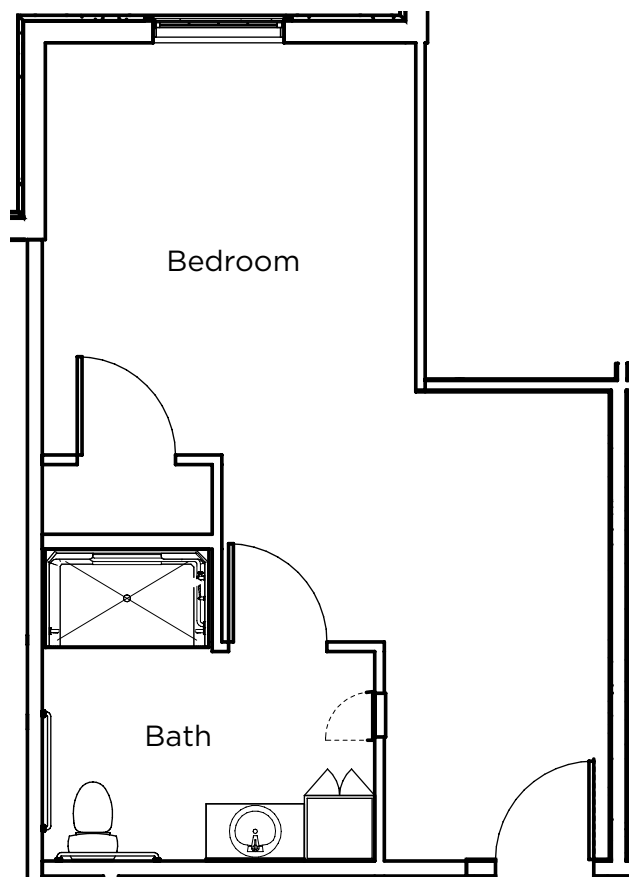
## Brookdale Foundation House

32290 1st Avenue South  
Federal Way, Washington 98003  
(253) 838-8823

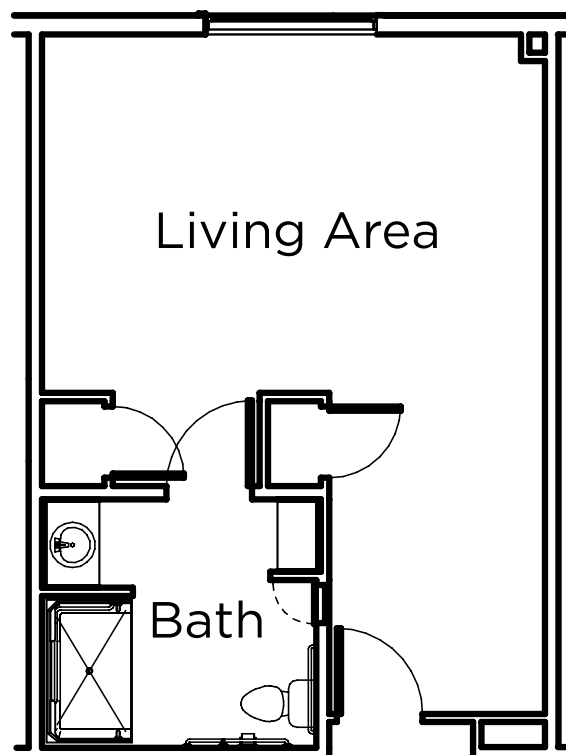
*Dimensions are approximate. Floor plans may vary.*

# Floor Plans Alzheimer's & Dementia Care

Shared Studio A



Shared Studio B



## Brookdale Foundation House

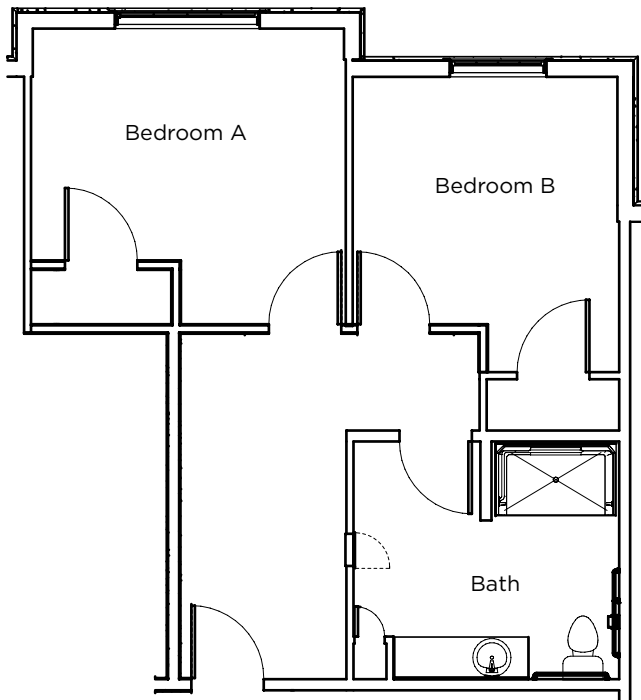
32290 1st Avenue South  
Federal Way, Washington 98003  
(253) 838-8823

*Dimensions are approximate. Floor plans may vary.*

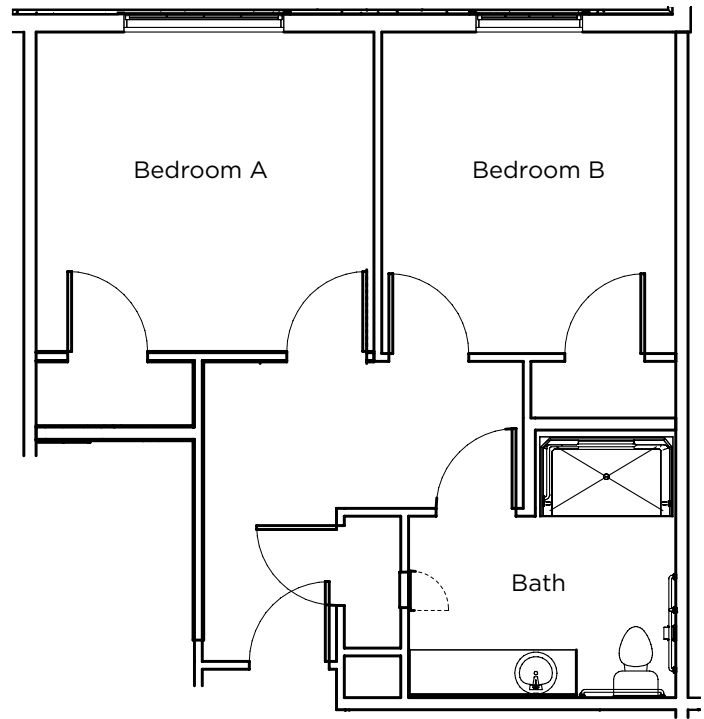


# Floor Plans Alzheimer's & Dementia Care

Shared Studio C



Shared Studio D



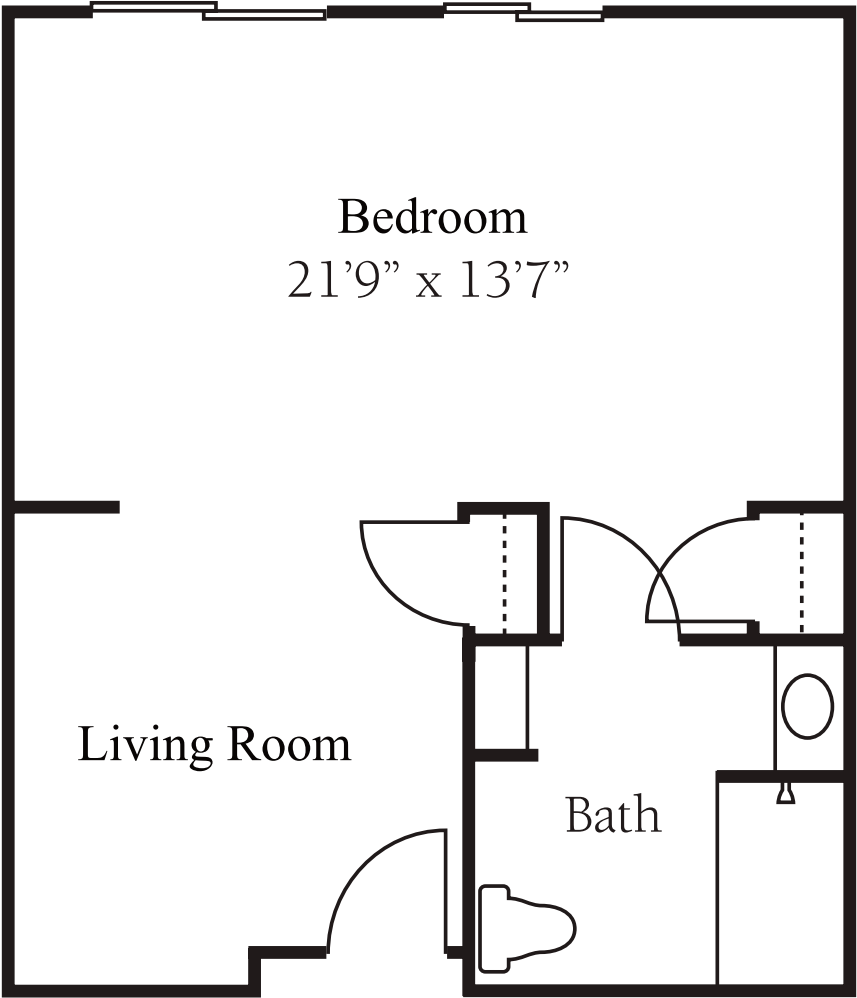
## Brookdale Foundation House

32290 1st Avenue South  
Federal Way, Washington 98003  
(253) 838-8823

*Dimensions are approximate. Floor plans may vary.*

# Floor Plans Alzheimer's & Dementia Care

Studio C-C2



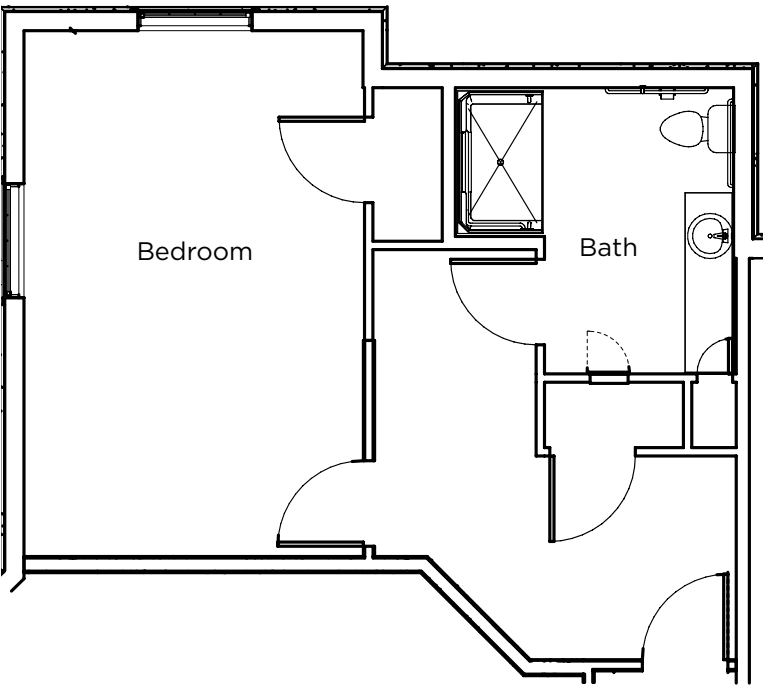
## Brookdale Foundation House

32290 1st Avenue South  
Federal Way, Washington 98003  
**(253) 838-8823**

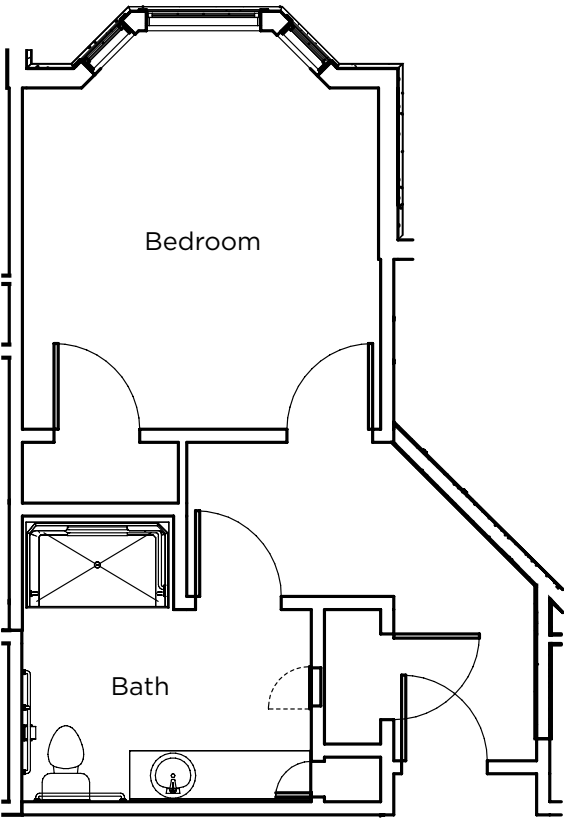
*Dimensions are approximate. Floor plans may vary.*

# Floor Plans Alzheimer's & Dementia Care

One Bedroom A



One Bedroom B



**Brookdale Foundation House**  
32290 1st Avenue South  
Federal Way, Washington 98003  
**(253) 838-8823**

*Dimensions are approximate. Floor plans may vary.*