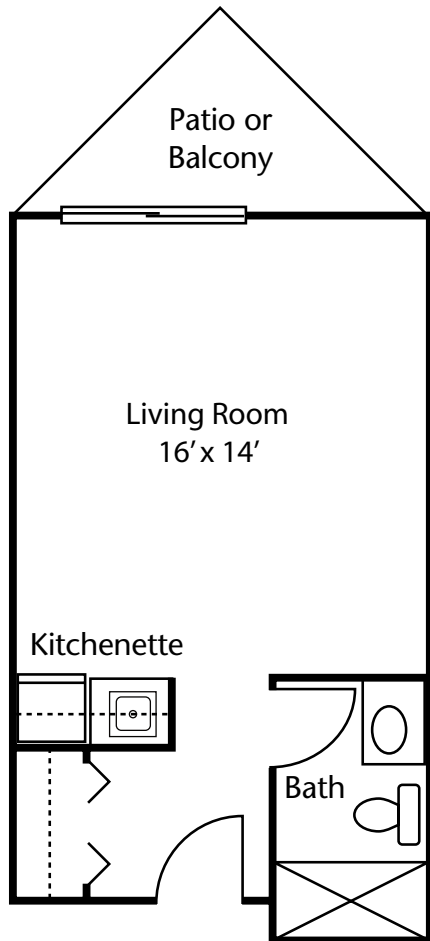


# Floor Plans

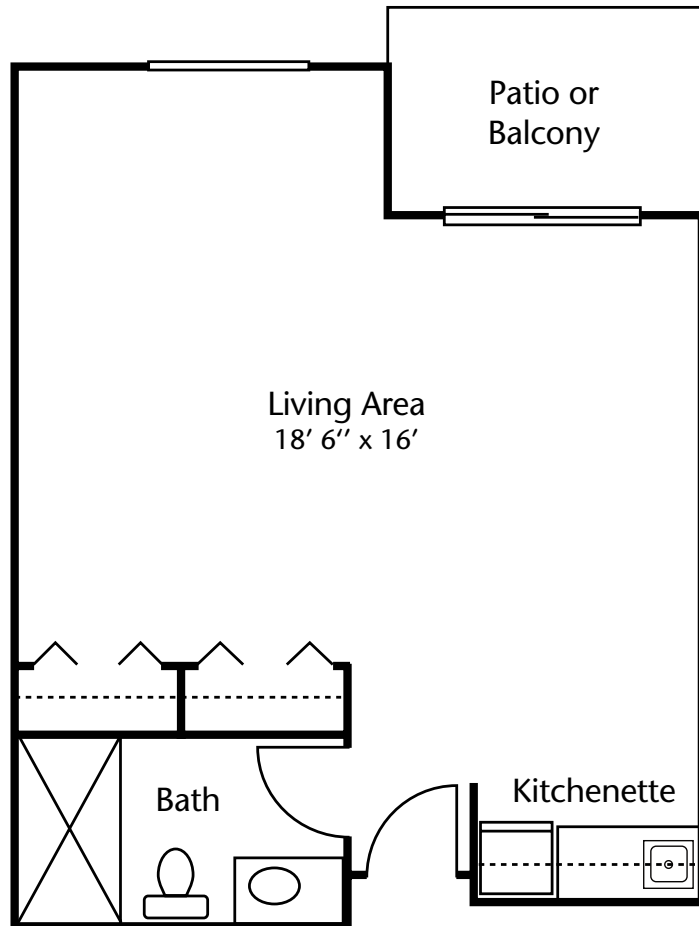
## Studio

364 sq. ft.



## Studio Deluxe

471 sq. ft.



## Brookdale Sparks

1900 East Prater Way  
Sparks, NV 89434

**(775) 359-7700**

*Dimensions are approximate. Floor plans may vary.*



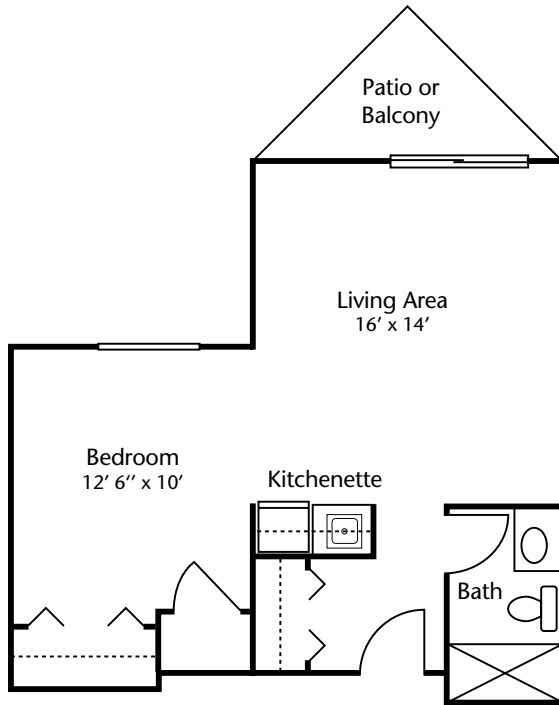
© 2025 Brookdale Senior Living Inc. All rights reserved.  
BROOKDALE SENIOR LIVING is a registered trademark of Brookdale Senior Living Inc.

brookdale.com

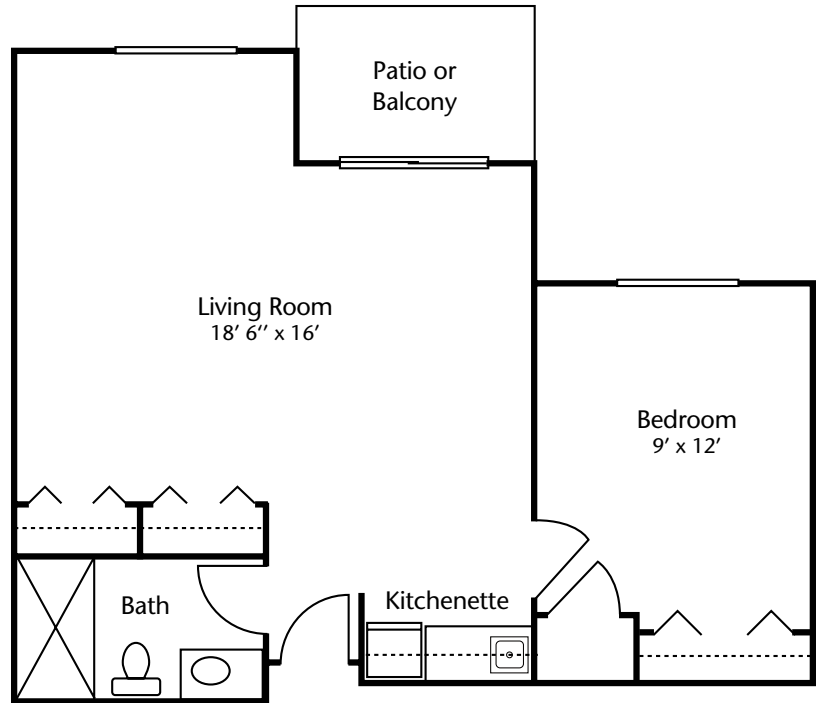


# Floor Plans

## One Bedroom 490 sq. ft.



## One Bedroom Deluxe I 616 sq. ft.

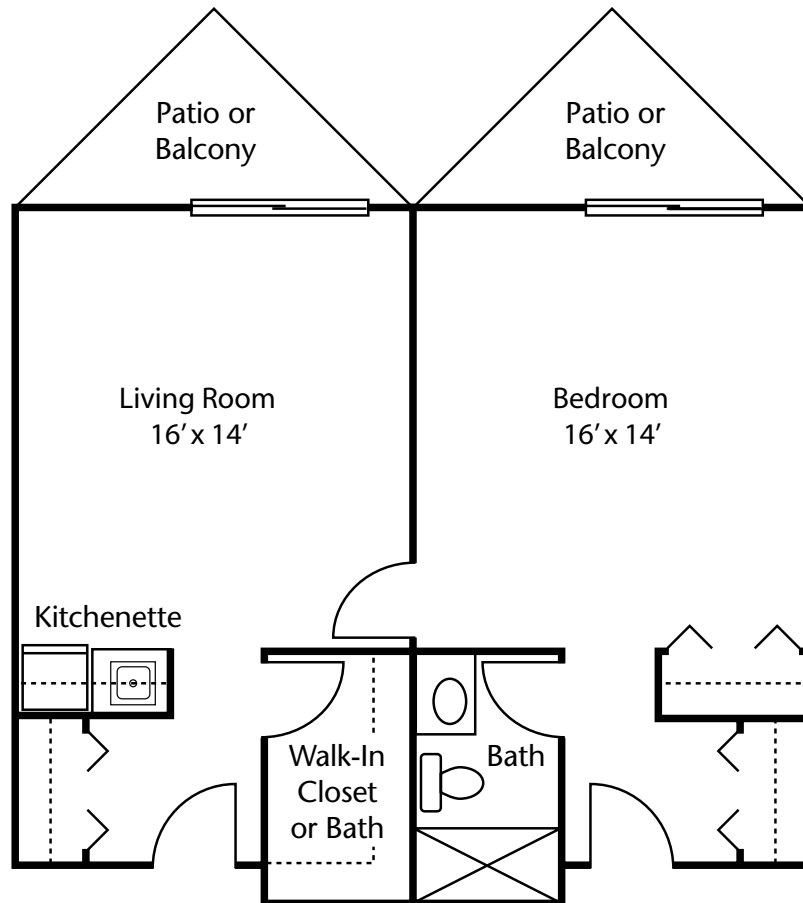


**Brookdale Sparks**  
1900 East Prater Way  
Sparks, NV 89434  
**(775) 359-7700**

*Dimensions are approximate. Floor plans may vary.*

# Floor Plans

One Bedroom Deluxe II  
728 sq. ft.



## Brookdale Sparks

1900 East Prater Way  
Sparks, NV 89434  
(775) 359-7700

*Dimensions are approximate. Floor plans may vary.*



© 2025 Brookdale Senior Living Inc. All rights reserved.  
BROOKDALE SENIOR LIVING is a registered trademark of Brookdale Senior Living Inc.

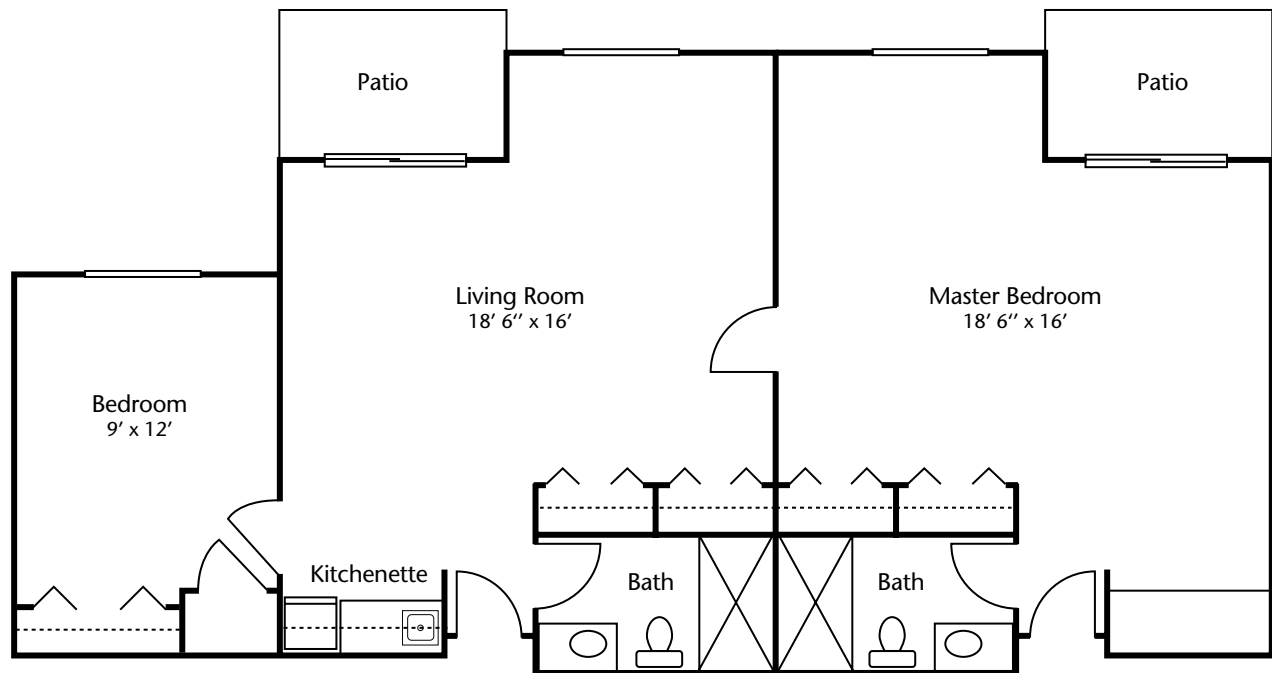
brookdale.com



# Floor Plans

## Two Bedroom I

961 sq. ft.



## Brookdale Sparks

1900 East Prater Way  
Sparks, NV 89434

(775) 359-7700

*Dimensions are approximate. Floor plans may vary.*



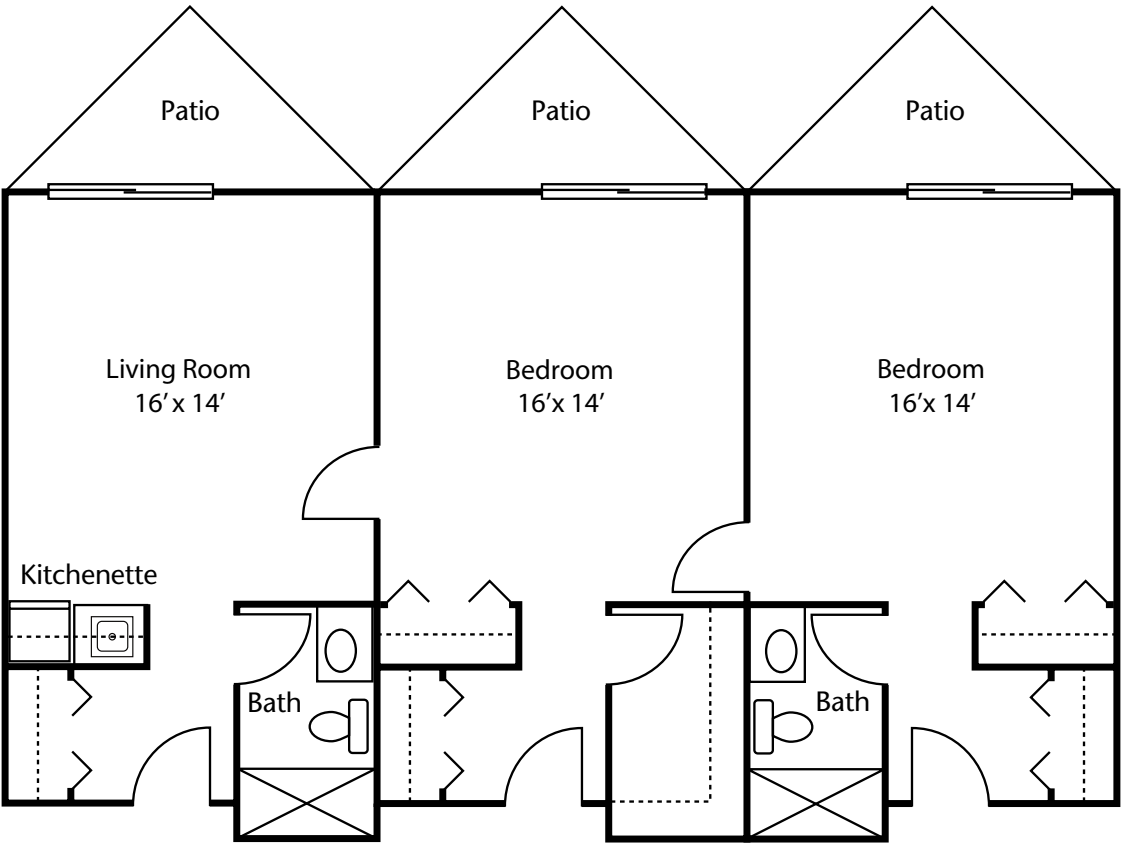
© 2025 Brookdale Senior Living Inc. All rights reserved.  
BROOKDALE SENIOR LIVING is a registered trademark of Brookdale Senior Living Inc.

brookdale.com



# Floor Plans

Two Bedroom II  
1,092 sq. ft.

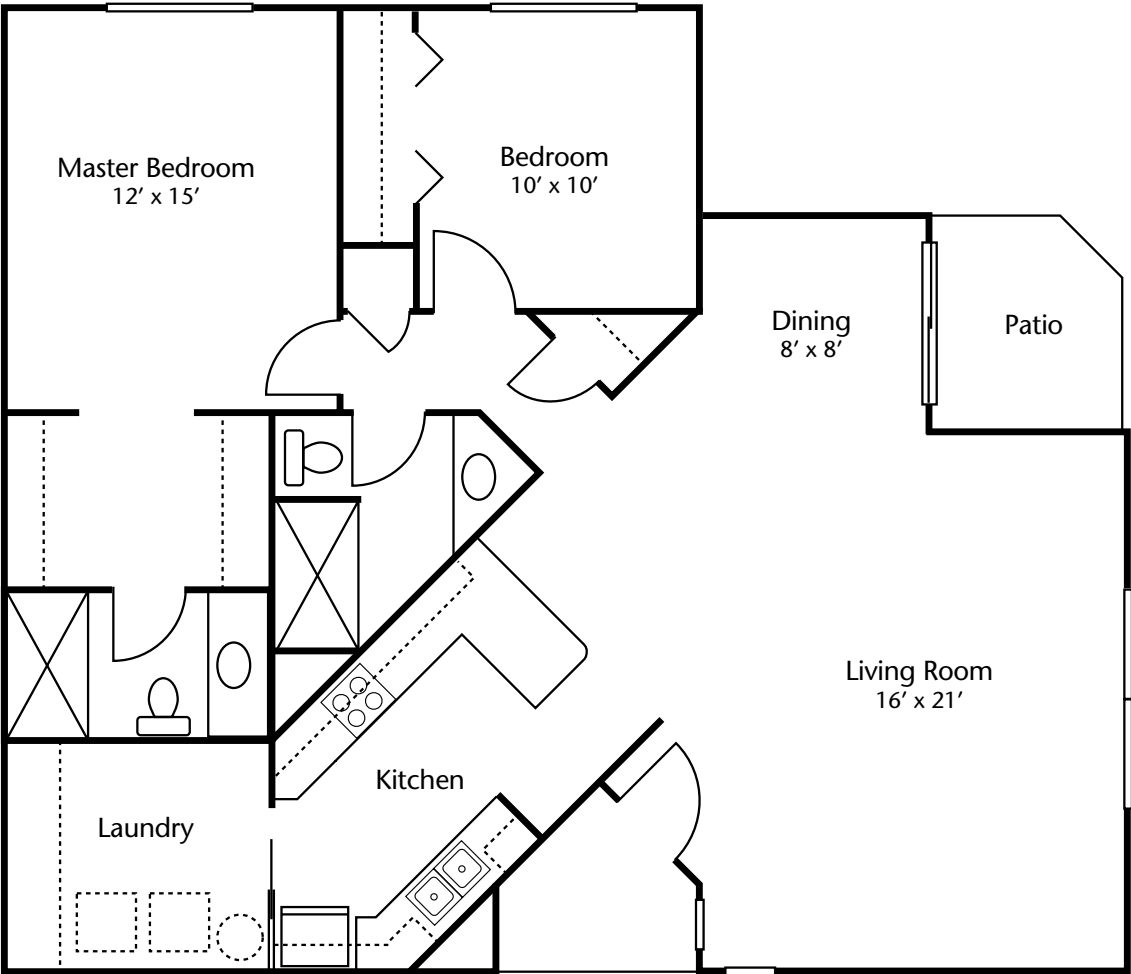


**Brookdale Sparks**  
1900 East Prater Way  
Sparks, NV 89434  
**(775) 359-7700**

*Dimensions are approximate. Floor plans may vary.*

# Floor Plans

Private Cottage  
1,375 sq. ft.



**Brookdale Sparks**  
1900 East Prater Way  
Sparks, NV 89434  
**(775) 359-7700**

*Dimensions are approximate. Floor plans may vary.*